

# Residential Construction Supply Chain Management Software

Now Enhanced with Hyphen Wallet

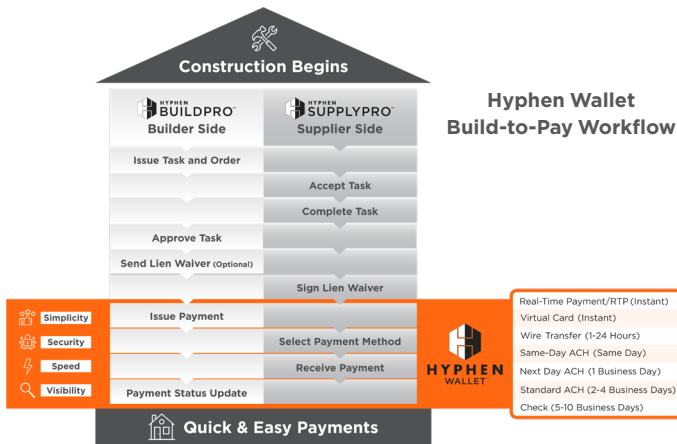
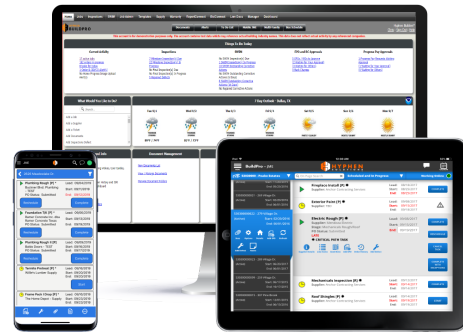


## Transform the Efficiency and Effectiveness of Your Residential Construction Management

BuildPro, renowned for its powerful features, has been the go-to choice for top Home Builders, streamlining project scheduling, bid approvals, Supplier coordination and purchase order management. Now, Hyphen Wallet elevates this experience by introducing real-time contractor billing and payment management. This innovative solution automates and simplifies the payables process, significantly reducing time-consuming and costly operations.

### Save Time & Money with BuildPro

Schedule and execute new home build projects in less time with less effort than ever before by using BuildPro to receive and approve bids, schedule Suppliers and approve POs. By easing Supplier communications and removing risk, eliminate countless man-hours preparing start packs and reduce material costs such as paper, toner, envelopes, folders and postage. BuildPro makes your job much easier, freeing up time to focus on taking your business to new heights.



### Enhanced with Hyphen Wallet ePayables

Transform the efficiency and effectiveness of your residential construction management with the advanced capabilities of BuildPro enhanced with Hyphen Wallet by introducing real-time contractor billing and payment management. This innovative solution automates, secures and simplifies the payables process, significantly reducing time-consuming and costly operations. With Hyphen Wallet, Builders can effortlessly manage invoices and payments to Suppliers, Contractors and Trades, enhancing transaction security and efficiency.

### More Efficiency with Advanced Communication

BuildPro home construction project management software seamlessly integrates with your current back-office system, so tracking and reporting are a breeze. Stop relying on intuition, fax machines, duplicate data entry and notepads. With BuildPro's all-in-one dashboard, you can schedule, collaborate with Trades, order receipts, obtain item details and more. BuildPro allows access to all of this on any device, whether it's desktop, tablet or mobile.

### Gain Visibility Into Payables

With BuildPro enhanced with Hyphen Wallet, Builders gain insight into every payment executed to their Trades by updating their back-office ERP with real-time status. For Suppliers, BuildPro enhanced with Hyphen Wallet provides a window into payments made by Builders with real-time status via the Hyphen Wallet portal. Hyphen Wallet also allows Suppliers to view payment reports in SupplyPro and download them into Excel for analysis. Now Suppliers can be easily connected to the Home Builder's payment system.

## BuildPro Serves the Ultimate Network from Homeowners to Manufacturers



### With BuildPro, Home Builders are now able to:

- ✓ Improve Communication
- ✓ Increase Productivity
- ✓ Reduce Costs & Human Errors
- ✓ Maximize Supply Chain Efficiency
- ✓ Manage Workflows
- ✓ Have Better Business Insight

### BuildPro Helps to Ease the Trade Burden


Your trades will not have to call you every time they have a question. Now they can access updates on any account, at any time, and avoid multiple disconnected platforms. It's your warranty solution, inspections, lien releases and document management all in one portal. Every single Trade is handled digitally, with clear records saved in the cloud, eliminating miscommunications and misunderstandings.

### Streamline Purchasing and Accounting

BuildPro transactions are 100% paperless on our cloud-based platform, meaning no more printing, separating, filing or distributing paperwork. Transactions to and from Trades are instantaneous and occur in real-time, so no repetitive effort is needed any time changes are made. With BuildPro, you can now digitally receive paperwork from the field in a matter of a few clicks. Authorize payments, identify and submit PO errors and eliminate logistical issues by instantaneously transmitting data to your Trades on a secure platform.

#### CONSTRUCTION BENEFITS:

- 


Mobility - manage projects from **anywhere**
- 


**Real-time** communication with trades
- 


Over **107K** users on the Hyphen Network
- 


**330,000** Homes built in 2022\*

#### PURCHASING BENEFITS:

- 

Full **control** over EPO/ VPO process
- 

**Automated**, electronic distribution of PO's
- 

Nearly **46 Million PO's** processed in 2022\*
- 

More than **\$68 Billion** in Supply Chain in 2022\*

Learn more about BuildPro enhanced with Hyphen Wallet

CONTACT US TO SCHEDULE A DEMO